



Installing Tocoman iLink 4 for Tekla Structures 16.1

Table of Contents

Installation.....	2
1. <i>Install Tekla Structures 16.1</i>	2
2. <i>Start Tocoman iLink Installation</i>	2
3. <i>Read the Instructions</i>	2
4. <i>Accept the License Agreement</i>	3
5. <i>Select the Installation Directory</i>	3
6. <i>Select the Unit System</i>	4
7. <i>Select Local Units</i>	4
8. <i>Start the Installation</i>	5
9. <i>Installation Progress</i>	6
10. <i>Exit the Installation</i>	6
Getting Started.....	7
Modifying Tekla Structures Settings.....	7

Installation

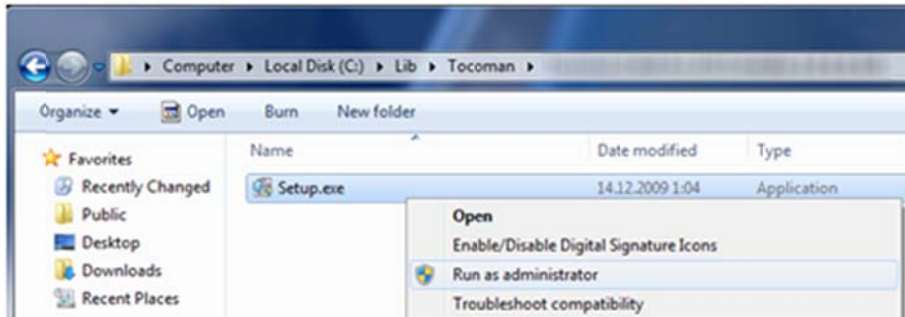
1. Install Tekla Structures 16.1

Tekla Structures 16.1 must be installed on the computer before installing Tocoman iLink 4 for Tekla Structures 16.1.

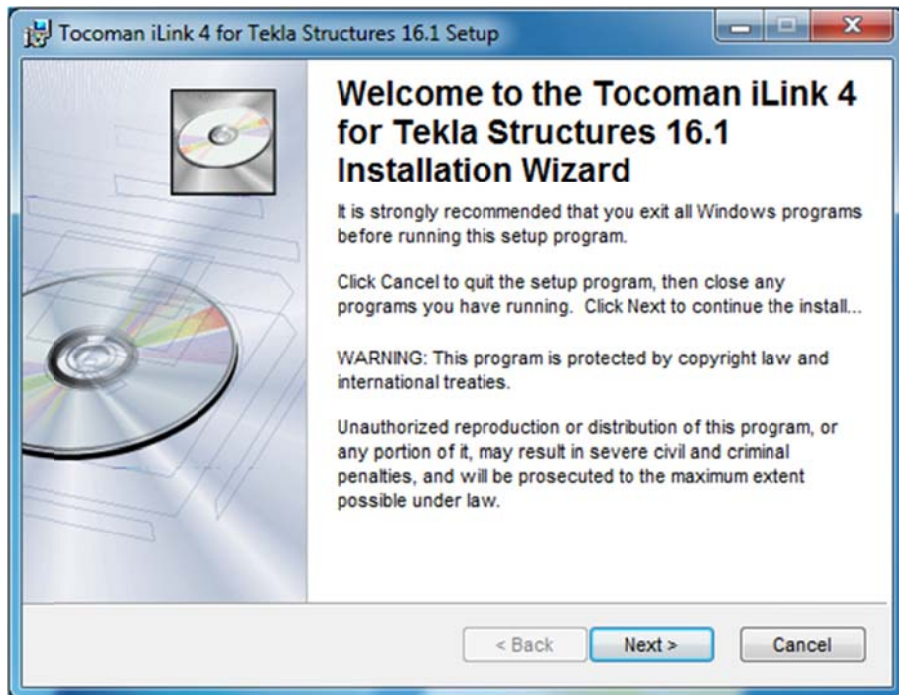
2. Start Tocoman iLink Installation

Start the installation by running the **Setup.exe** installation program. The installation can be canceled at any time by pushing a **Cancel** button.

If you have either Windows Vista or Windows 7 operating system, please use the **Run as administrator** feature.

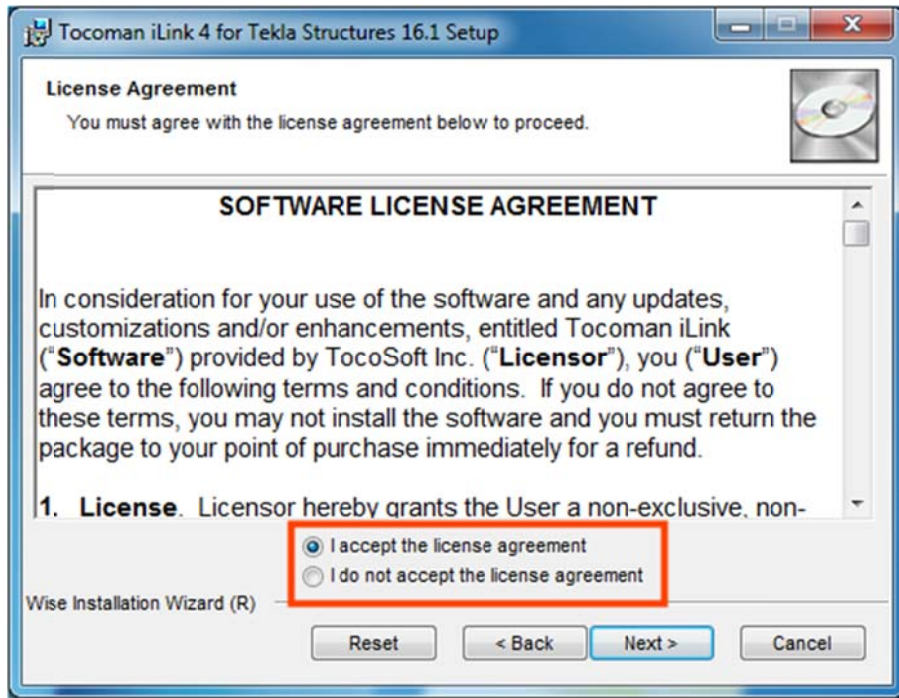


3. Read the Instructions



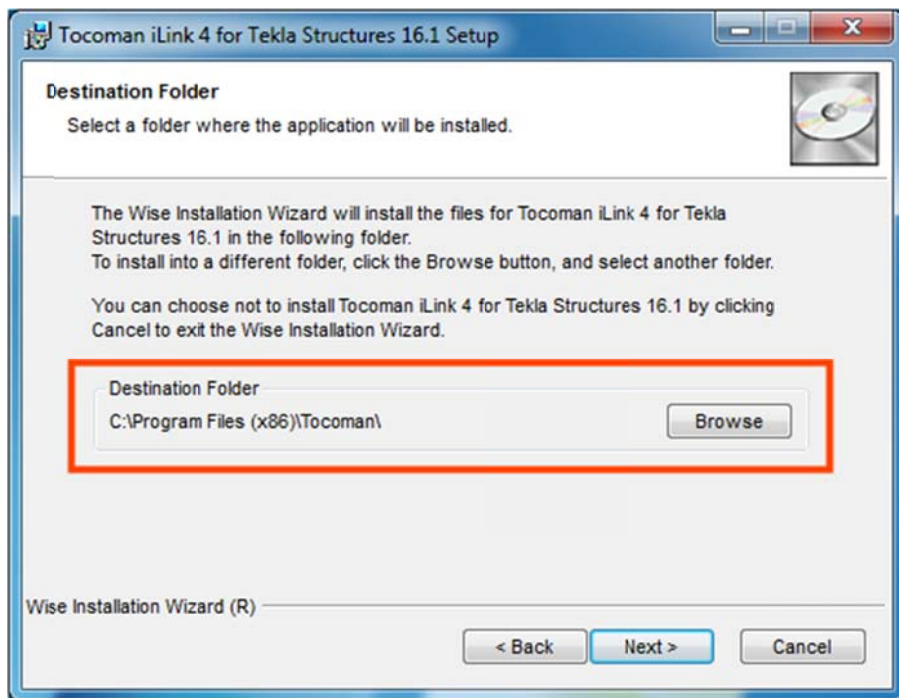
Click **Next >** button to continue.

4. Accept the License Agreement



Read the license agreement carefully. To continue the installation, select the option **I accept the license agreement** and click the **Next >** button.

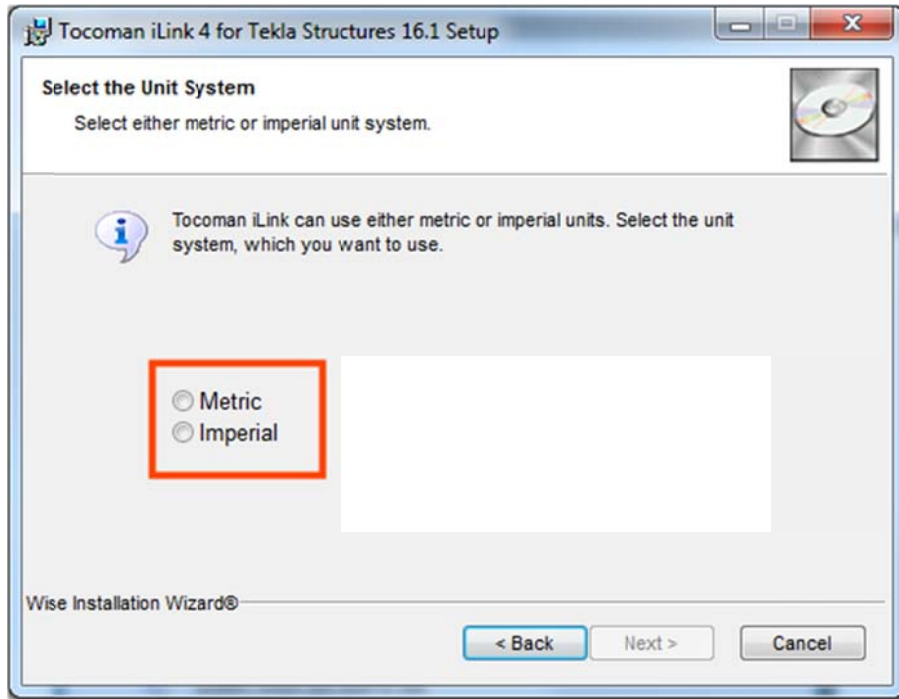
5. Select the Installation Directory



You can specify to which folder Tocoman iLink is installed. If you do not want to use the default folder, please change it using the **Browse** button.

Click **Next >** button to continue.

6. Select the Unit System



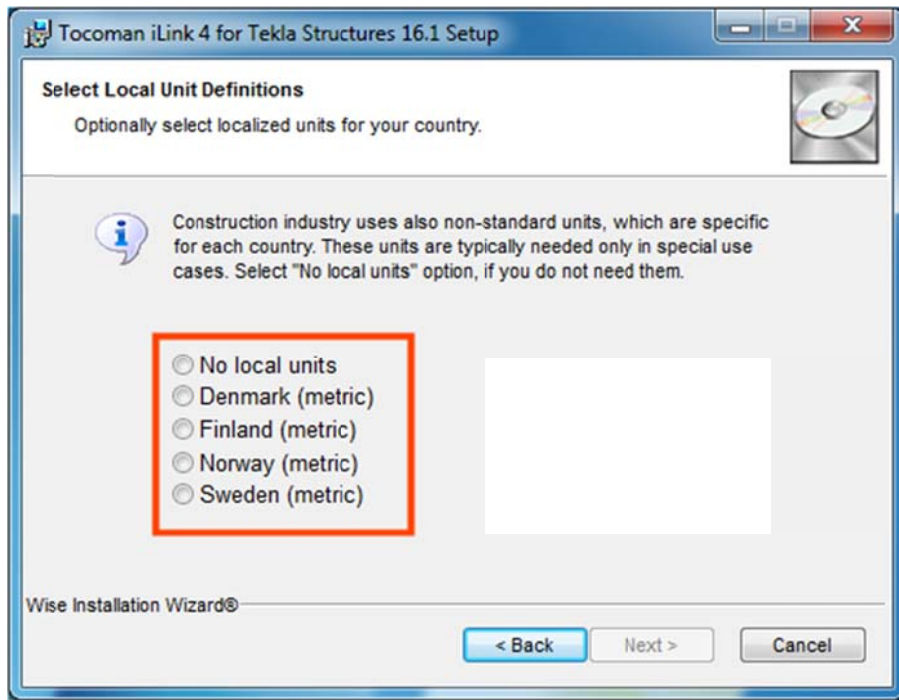
Select either **Metric** or **Imperial** unit system. You cannot continue the installation before making the selection.

Click **Next >** button to continue.

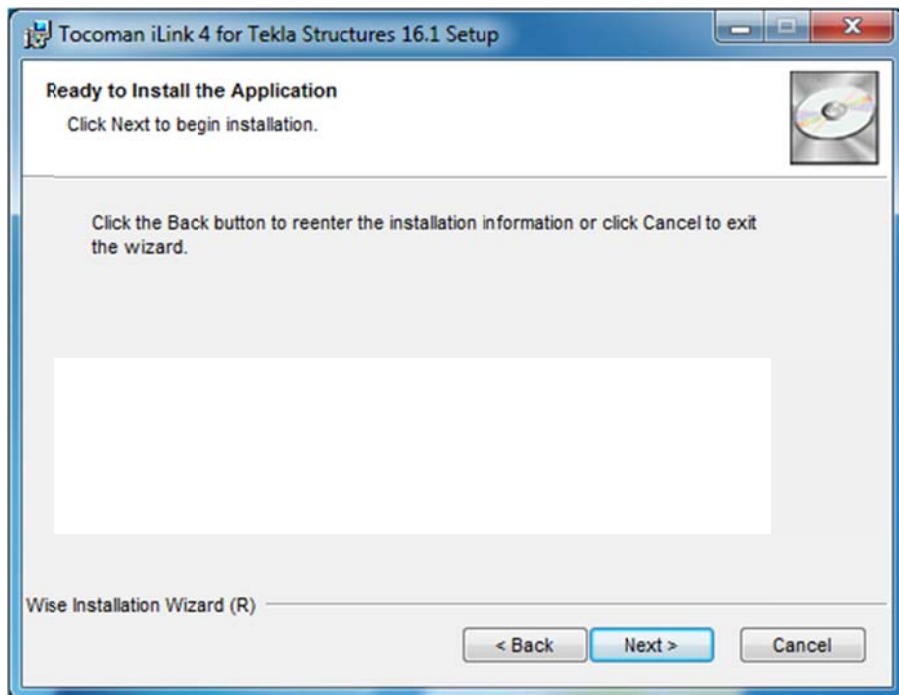
7. Select Local Units

Tocoman iLink will contain either standard metric or imperial. Besides these units, you can add local units (e.g. Swedish) into your installation. Select your local units from the list or use the **No local units** option. You cannot continue the installation before making the selection.

Click **Next >** button to continue.

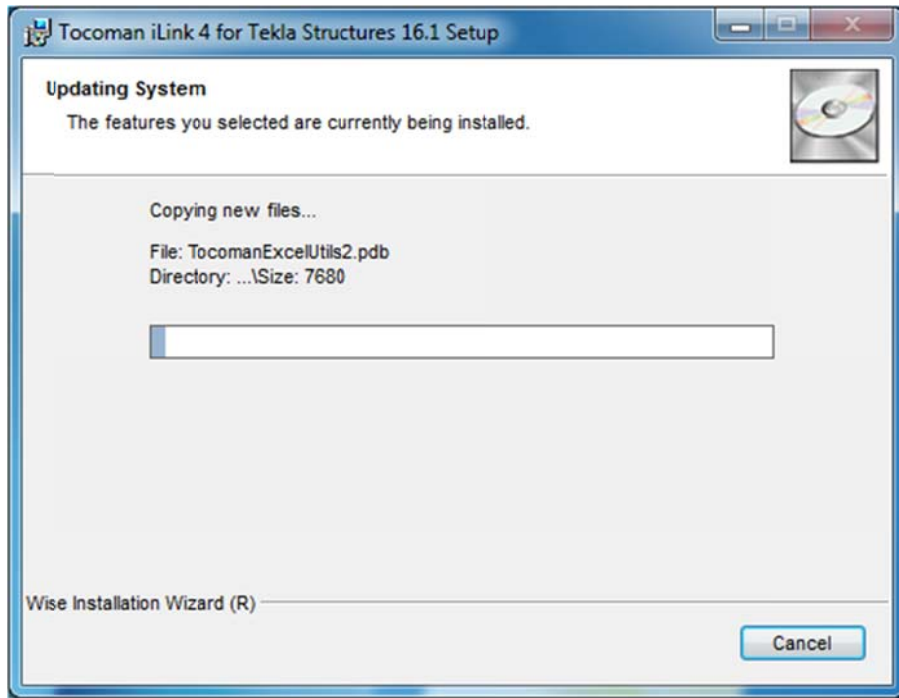


8. Start the Installation



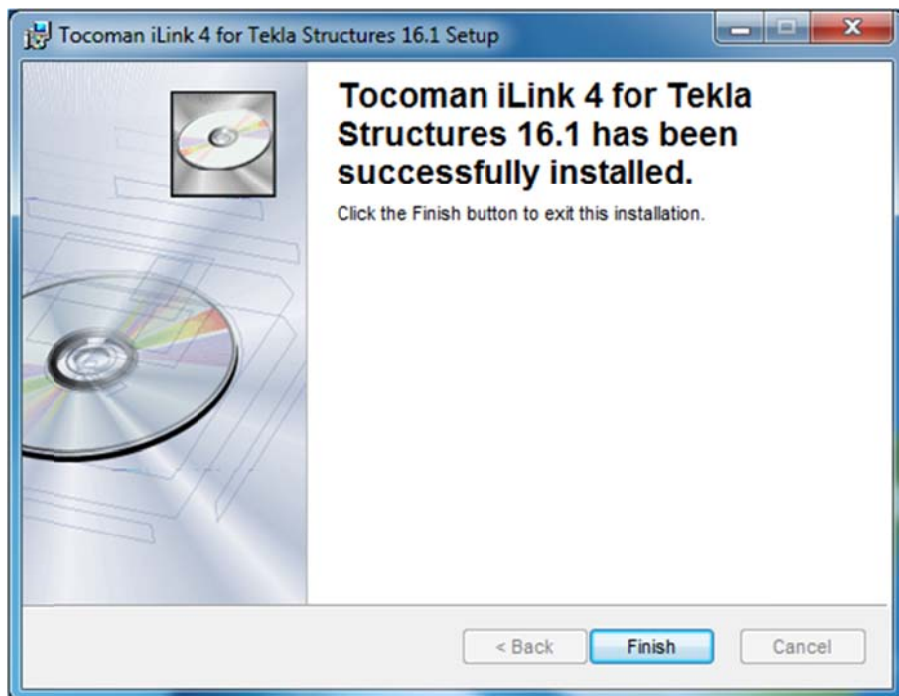
Click **Next >** button to start the actual installation.

9. Installation Progress



The installation may take several minutes depending on the computer.

10. Exit the Installation

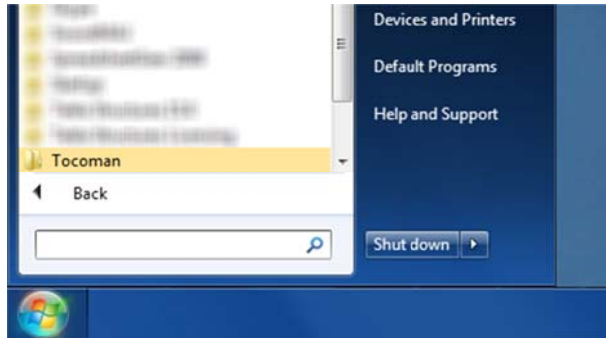


Click the **Finish** > button to exit the installation.

Getting Started

Tocoman iLink’s help includes a getting started guide, which contains information about **starting the application** and basic functionality in it.

You can access the help using Windows Start menu. Browse to **Tocoman > iLink for Tekla Structures 16.1** and click **Help** link.



Modifying Tekla Structures Settings

Tekla Structures has certain system variables, which affect the accuracy of the quantities. It is important that you set the variable values before using Tekla Structures for BIM based quantity take-off.

Accuracy of Solids

Variable(s):

- XS_SOLID_USE_HIGHER_ACCURACY

This variable is located in Tekla’s “user.ini” file. The default location for the setting file is one of the following.

Any operating system

C:\TeklaStructures\16.0\environments\common\default_user.ini

Windows Vista or Windows 7

C:\Users\<username>\AppData\Local\Tekla Structures\16\UserSettings\user.ini

Windows XP

C:\Documents and Settings\<username>\Application Data\Tekla Structures\16\UserSettings\user.ini

Set the variable value to “TRUE” or add the variable and value, if they are missing totally from the file (see example below).

```

rem =====
rem      Tekla Structures user defined settings
rem
rem      --- Please do your own system modifications here! ---
rem
rem =====

rem -----
rem --- UNIVERSAL SETTINGS ---
rem -----
rem Add settings here that you want to use in both user modes
rem
rem set XS_FIRM=..firm folder path\
rem set XS_PROJECT=..project folder path\
rem set XS_STD_PART_MODEL=..
rem set XS_PROFDB=..
rem :::

rem set XS_VIEW_POSITION_X=5
rem set XS_VIEW_POSITION_Y=5
rem set XS_VIEW_WIDTH=1024
rem set XS_VIEW_HEIGHT=768
set XS_SOLID_USE_HIGHER_ACCURACY=TRUE

```

If you need to add the variable, you can copy and paste the following text at the end of the current setting file.

`set XS_SOLID_USE_HIGHER_ACCURACY=TRUE`

Calculating Polybeams

Variable(s):

- XS_CALCULATE_POLYBEAM_LENGTH_ALONG_REFERENCE_LINE
- XS_USE_OLD_POLYBEAM_LENGTH_CALCULATION

These variables are located in Tekla's Advanced Options dialog. Access the dialog from **Tools > Options > Advanced** menu.

The options can be found from **Dimensioning: Unfolding** list item at the left. Check the values and set them empty if needed (see example below).

