



Installing Tocoman iLink 4 for Revit 2012

Table of Contents

<i>Installation</i>	2
1. <i>Install Autodesk Revit 2012</i>	2
2. <i>Start Tocoman iLink Installation</i>	2
3. <i>Read the Instructions</i>	2
4. <i>Accept the License Agreement</i>	3
5. <i>Select the Installation Directory</i>	3
6. <i>Select the Unit System</i>	4
7. <i>Select Local Units</i>	4
8. <i>Start the Installation</i>	5
9. <i>Installation Progress</i>	6
10. <i>Exit the Installation</i>	6
<i>Getting Started</i>	7

Installation

1. Install Autodesk Revit 2012

Autodesk Revit 2011 Architecture or Structure must be installed on the computer before installing Tocoman iLink 4 for Revit 2012.

2. Start Tocoman iLink Installation

Start the installation by running the **Setup.exe** installation program. The installation can be canceled at any time by pushing a **Cancel** button.

If you have either Windows Vista or Windows 7 operating system, please use the **Run as administrator** feature.



3. Read the Instructions



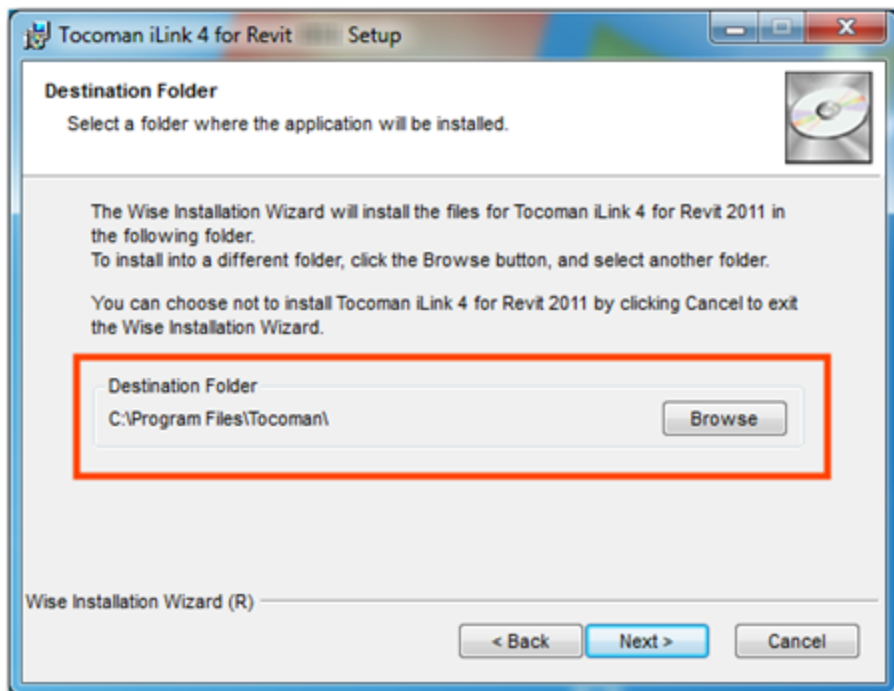
Click **Next >** button to continue.

4. Accept the License Agreement



Read the license agreement carefully. To continue the installation, select the option **I accept the license agreement** and click the **Next >** button.

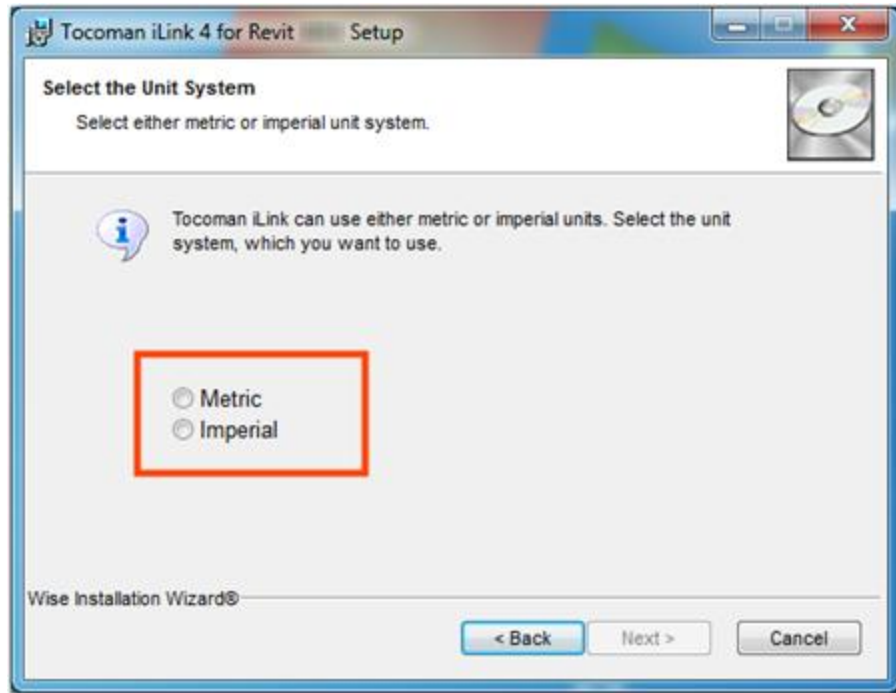
5. Select the Installation Directory



You can specify to which folder Tocoman iLink is installed. If you do not want to use the default folder, please change it using the **Browse** button.

Click **Next >** button to continue.

6. Select the Unit System



Select either **Metric** or **Imperial** unit system. You cannot continue the installation before making the selection.

Click **Next >** button to continue.

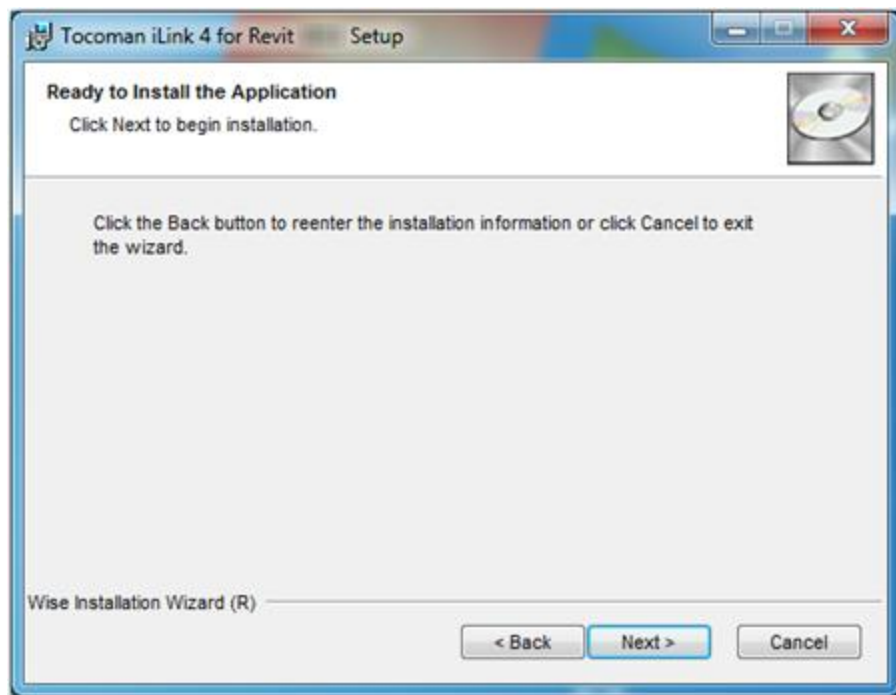
7. Select Local Units

Tocoman iLink will contain either standard metric or imperial. Besides these units, you can add local units (e.g. Swedish) into your installation. Select your local units from the list or use the **No local units** option. You cannot continue the installation before making the selection.

Click **Next >** button to continue.

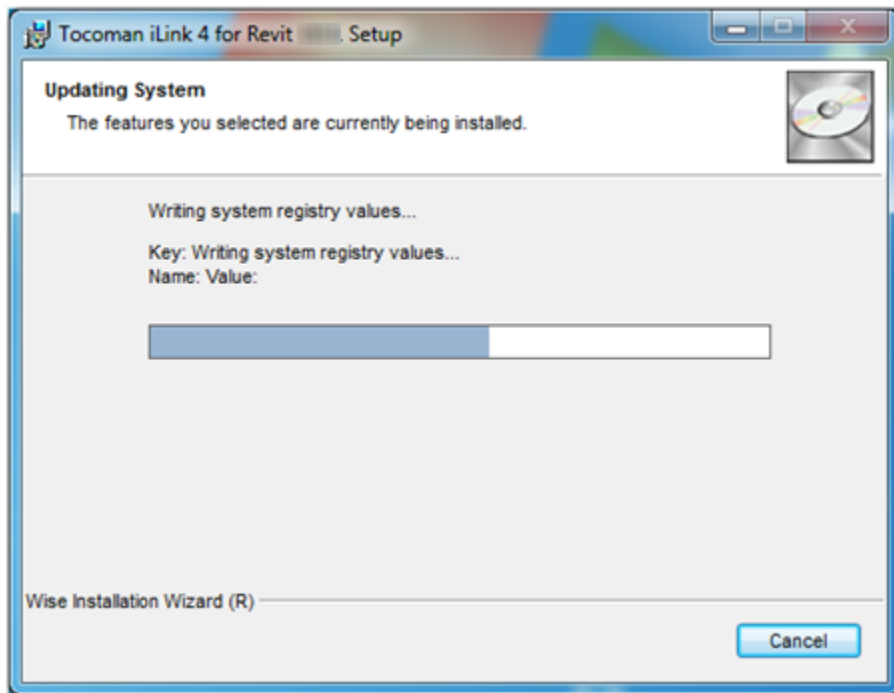


8. Start the Installation



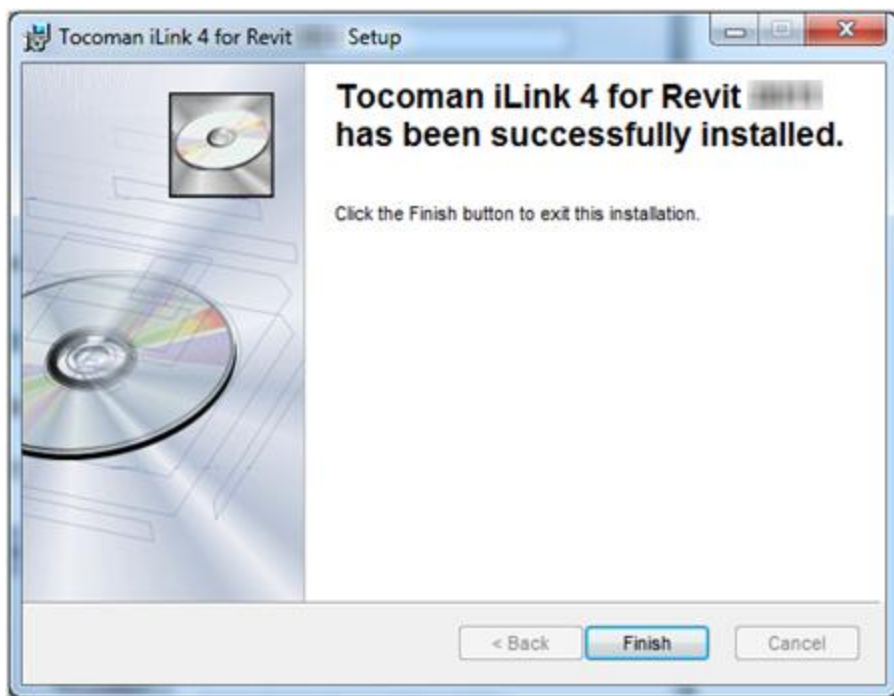
Click **Next >** button to start the actual installation.

9. Installation Progress



The installation may take several minutes depending on the computer.

10. Exit the Installation



Click the **Finish** > button to exit the installation.

Getting Started

Tocoman iLink's help includes a getting started guide, which contains information about **starting the application** and basic functionality in it.

You can access the help using Windows Start menu. Browse to [Tocoman > iLink for Revit 2012](#) and click **Help** link.

