



Installing Tocoman iLink 4 for ArchiCAD 15

Table of Contents

Installation.....	2
1. <i>Install Graphisoft ArchiCAD 15</i>	2
2. <i>Start Tocoman iLink Installation</i>	2
3. <i>Read the Instructions</i>	2
4. <i>Accept the License Agreement</i>	3
5. <i>Select the ArchiCAD Installation Directory</i>	3
6. <i>Select the ArchiCAD Add-Ons Directory</i>	4
7. <i>Select the Unit System</i>	5
8. <i>Select Local Units</i>	5
9. <i>Start the Installation</i>	6
10. <i>Installation Progress</i>	7
10. <i>Exit the Installation</i>	7
Getting Started.....	8
Modifying ArchiCAD's Work Environment.....	8

Installation

1. Install Graphisoft ArchiCAD 15

Graphisoft ArchiCAD 15 must be installed on the computer before installing Tocoman iLink 4 for ArchiCAD 15.

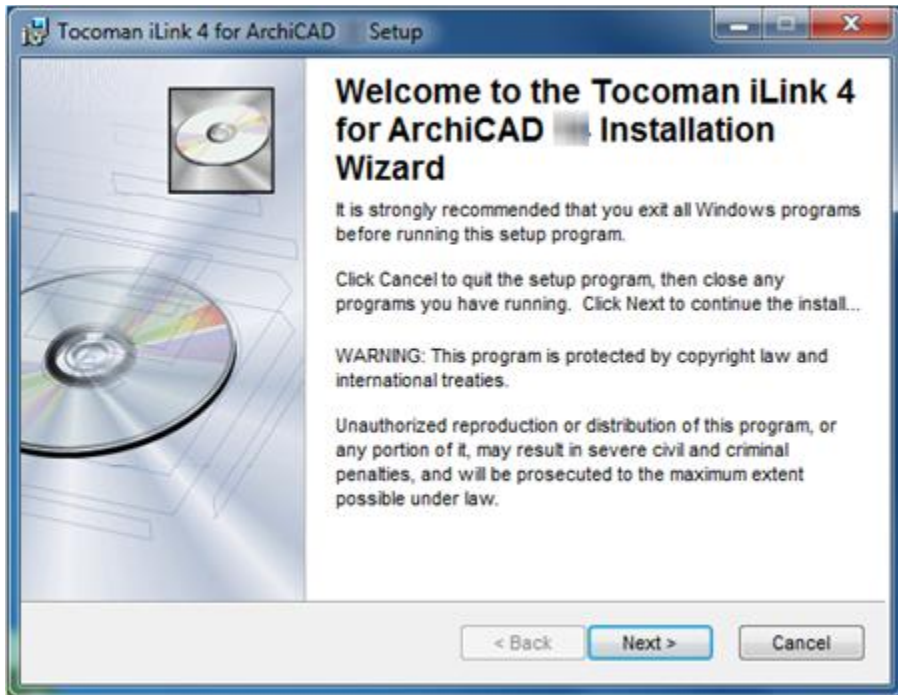
2. Start Tocoman iLink Installation

Start the installation by running the **Setup.exe** installation program. The installation can be canceled at any time by pushing a **Cancel** button.

If you have either Windows Vista or Windows 7 operating system, please use the **Run as administrator** feature.

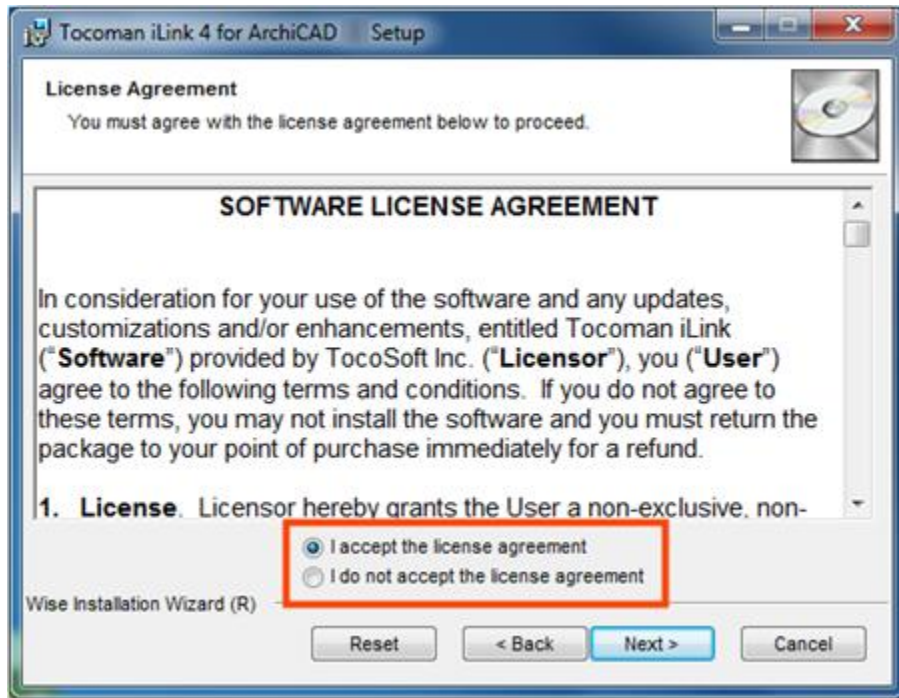


3. Read the Instructions



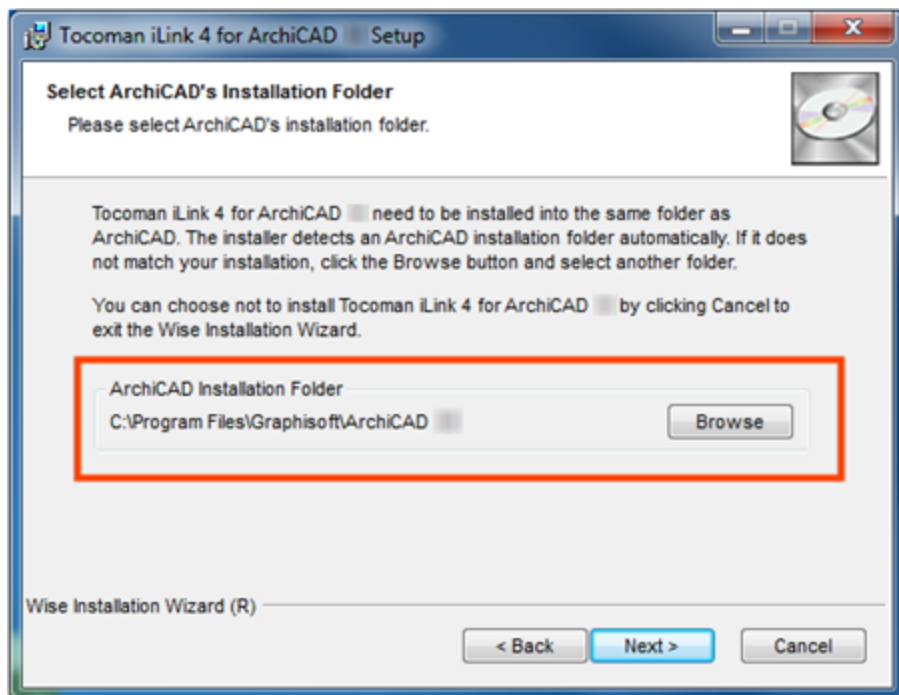
Click **Next >** button to continue.

4. Accept the License Agreement



Read the license agreement carefully. To continue the installation, select the option **I accept the license agreement** and click the **Next >** button.

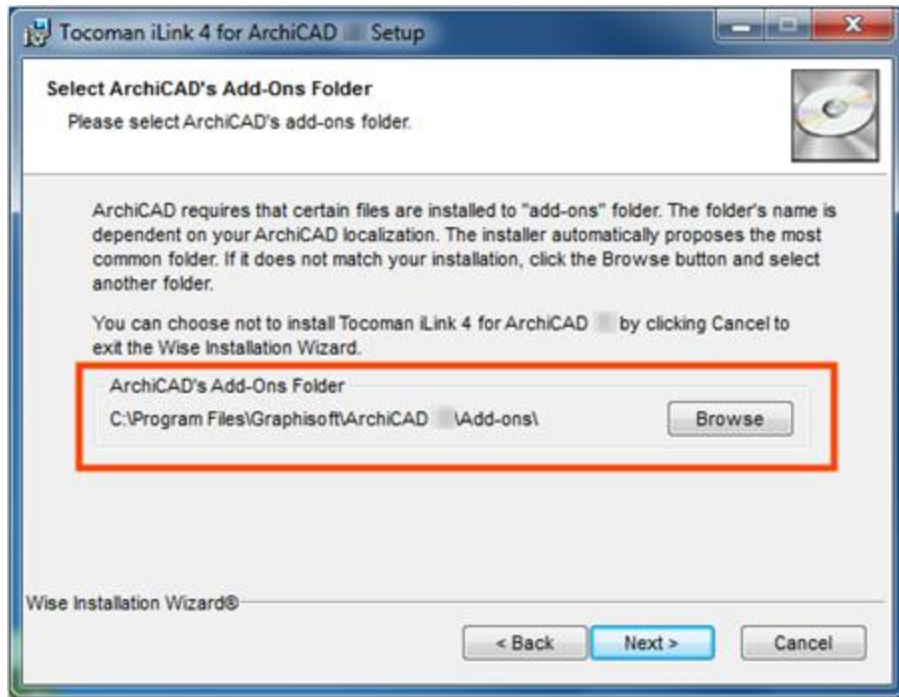
5. Select the ArchiCAD Installation Directory



You need to specify the folder containing your ArchiCAD installation. If the default value is not correct, change the folder using the **Browse** button.

Click **Next >** button to continue.

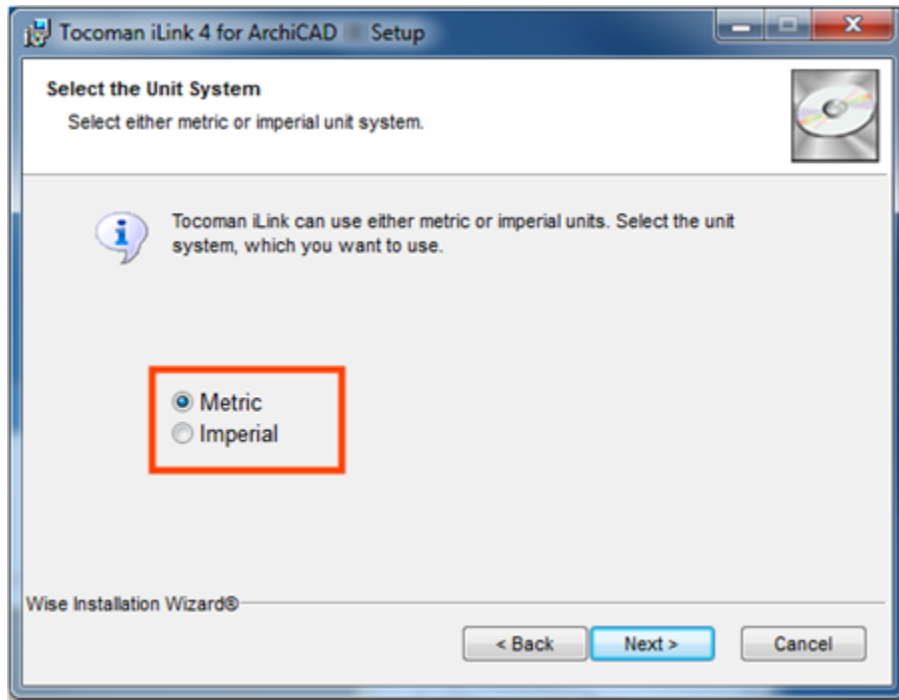
6. Select the ArchiCAD Add-Ons Directory



You need to specify the folder containing ArchiCAD add-ons. If the default value is not correct, change the folder using the **Browse** button.

Click **Next >** button to continue.

7. Select the Unit System



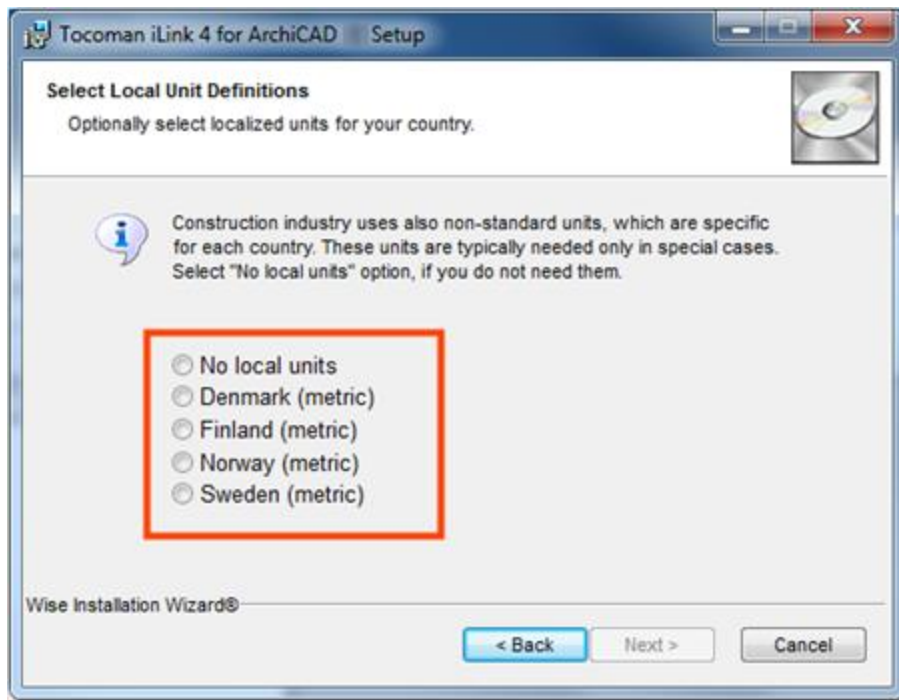
Select either **Metric** or **Imperial** unit system. You cannot continue the installation before making the selection.

Click **Next >** button to continue.

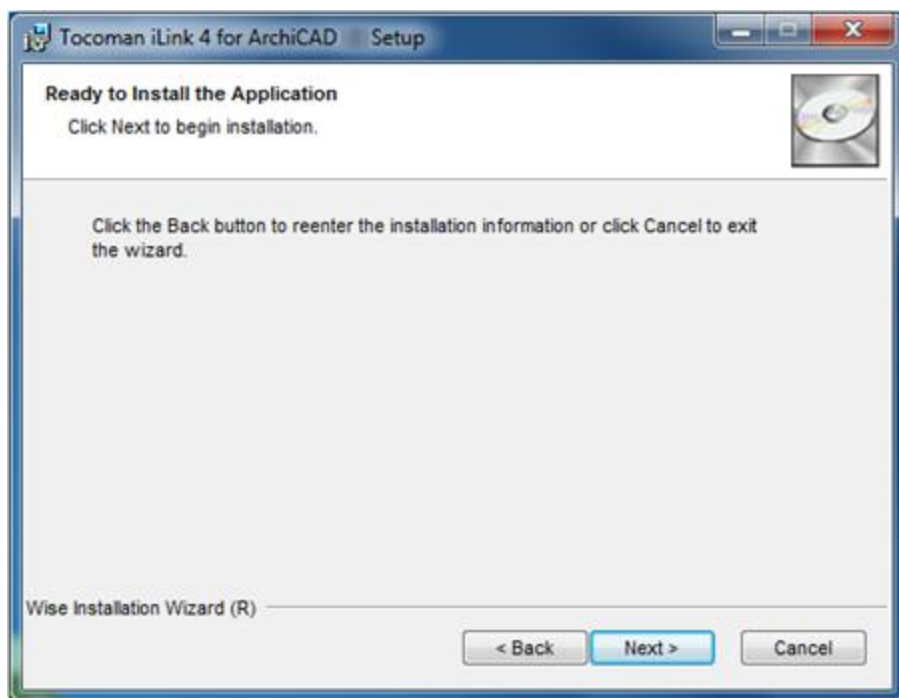
8. Select Local Units

Tocoman iLink will contain either standard metric or imperial. Besides these units, you can add local units (e.g. Swedish) into your installation. Select your local units from the list or use the **No local units** option. You cannot continue the installation before making the selection.

Click **Next >** button to continue.

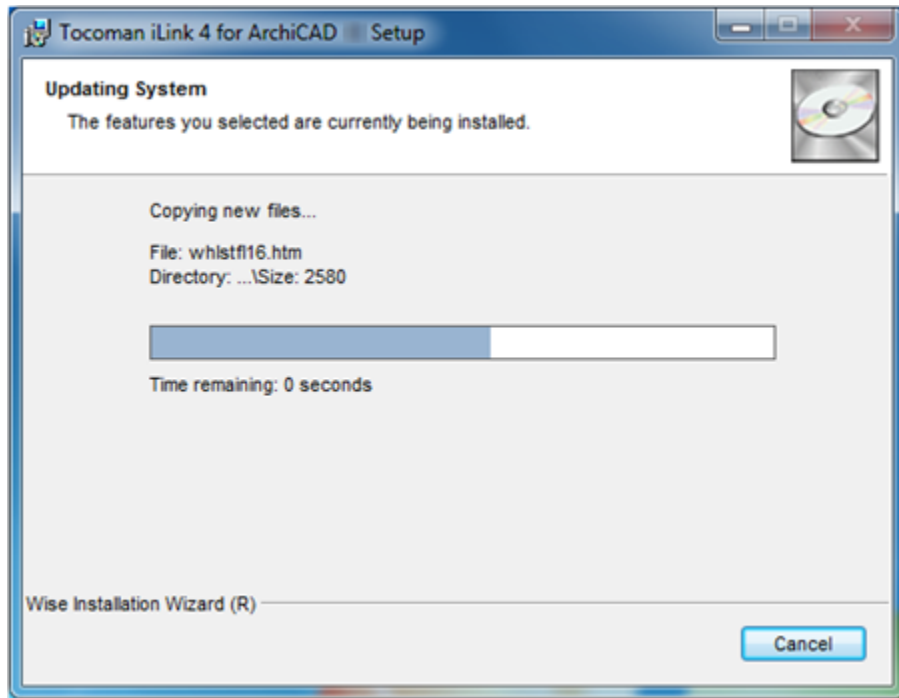


9. Start the Installation



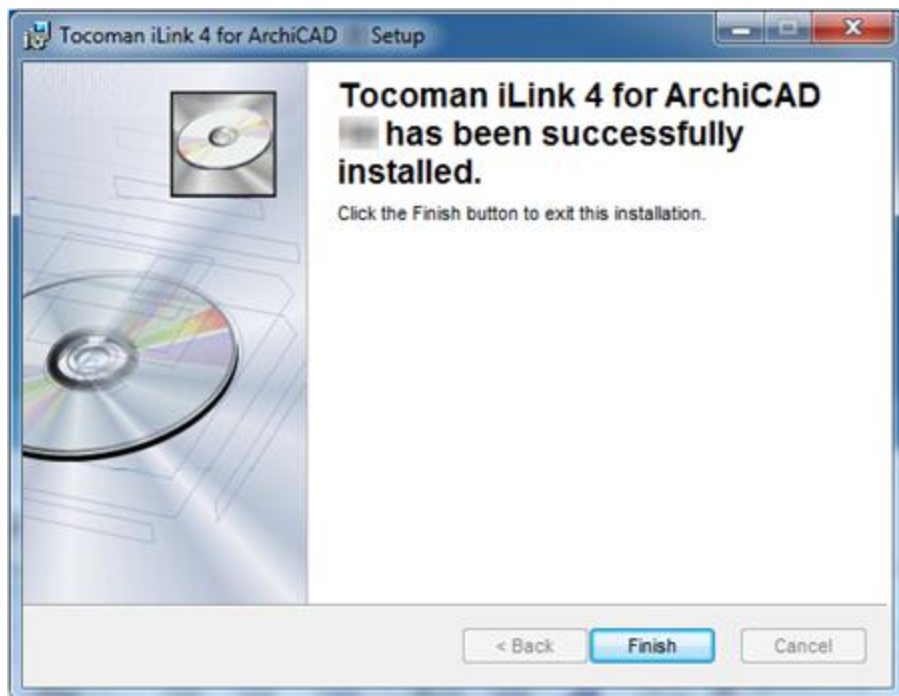
Click **Next >** button to start the actual installation.

10. Installation Progress



The installation may take several minutes depending on the computer.

10. Exit the Installation

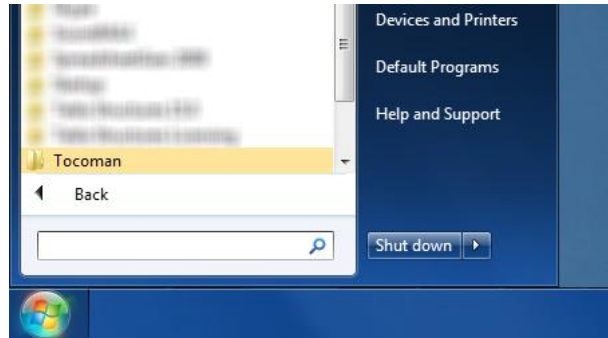


Click the **Finish >** button to exit the installation.

Getting Started

Tocoman iLink's help includes a getting started guide, which contains information about **starting the application** and basic functionality in it.

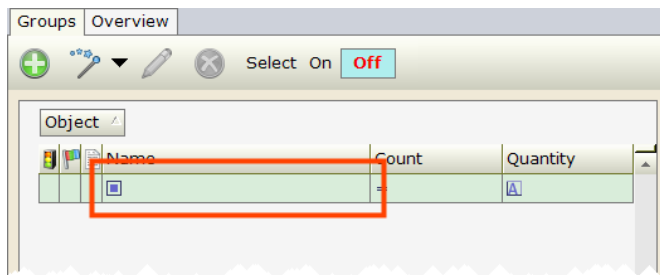
You can access the help using Windows Start menu. Browse to **Tocoman > iLink for ArchiCAD 15** and click **Help** link.



Modifying ArchiCAD's Work Environment

Background

Default settings of the Graphisoft ArchiCAD contain single character shortcut keys (e.g. **a** and **s**). Using a shortcut character in iLink's search fields will launch an ArchiCAD command instead of appearing into the field.



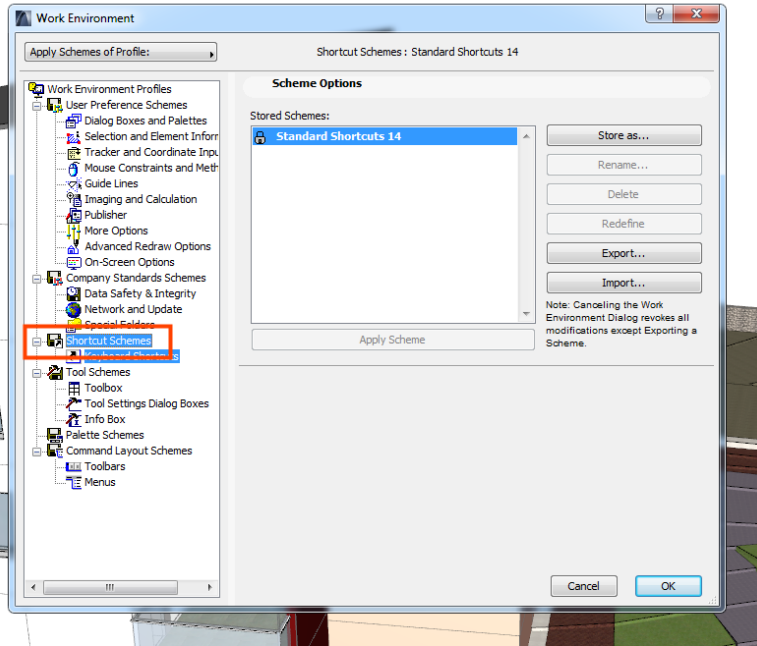
The problem can be solved by modifying the shortcut keys. The instructions are presented in the next chapters.

1. Start ArchiCAD

Start ArchiCAD normally.

2. Open Work Environment Settings

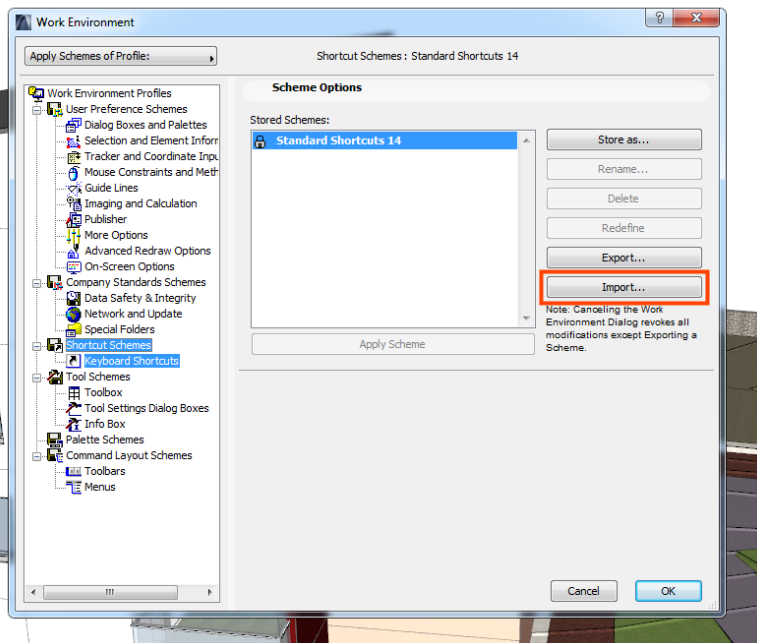
Select **Options > Work Environment > Work Environment** from the ArchiCAD menu. A dialog containing the settings is displayed.



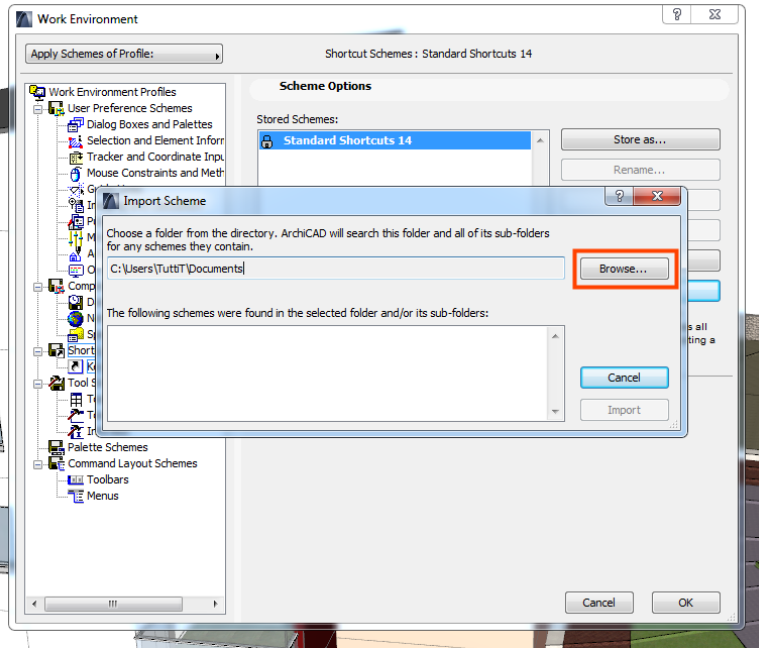
Select **Shortcut Schemes** section from the tree at the left.

3. Import Settings for Tocoman iLink

Click **Import** button.

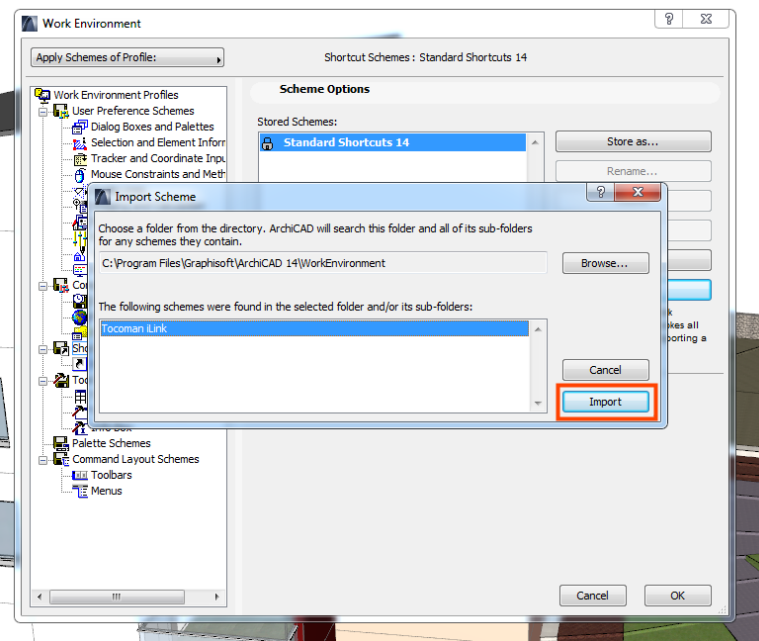


ArchiCAD automatically starts to search for the setting files from user's My Documents folder. Press **Backspace** button to stop the search.



Click Browse button and select the following folder. After selecting the folder, ArchiCAD displays the Tocoman iLink settings.

<ArchiCAD installation folder>\WorkEnvironment



Select **Tocoman iLink** from the list and click **Import** button.

4. Apply the Settings

Select **Tocoman iLink** form the list and click **Apply Scheme** button.

